

# 270° Adjustment Dial Pressure Regulator

R11...R41

**Description**

Piston-operated regulator with balanced valve design and high-relief flow. Features include a transparent pressure-calibrated, non-rising adjusting dial which can be mounted in any position so the dial face is always visible. Pressure setting in steps is possible.

**Media**

compressed air or non-corrosive gases

**Supply pressure**

max. 21 bar, minimum 1 bar above outlet pressure

**Air consumption**

R21/31/41: max. 1.4 l/min depending on outlet pressure R11 without constant bleed

**Adjustment**

The full secondary pressure range can be dialed in less than a 270° turn proportional to handwheel with scale in bar or psi. This is advantageous if secondary pressure must be changed frequently.

**Relieving function**

relieving

**Gauge port**

G¼ on both sides of the body, not available at R11

**Mounting position**

any

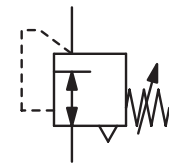
**Temperature range**

0 °C to 65 °C / 32 °F to 149 °F

**Material**

Body: zinc die-cast  
o-ring: NBR/Buna-N

Piston: acetal  
Valve seat: acetal, brass and NBR/Buna-N



G¼ up to G2  
fast adjustment



Dimensions			K <sub>v</sub> value (m³/h)	Flow rate		Connection thread G	Pressure range bar	Order number
A	B	C		m³/h*1	l/min*1			

Adjustment dial regulator							supply pressure max. 21 bar, relieving, with constant bleed, adjusting dial 270° turn wheel		R11...R41
66	71	10	0.02	1.2	20	G¼	0... 3	0... 11	R11-C2-L R11-C2-O
81	104	24	2.5	180	3000	G¼	0... 3	0... 11	R21-C2-L R21-C2-O
81	104	24	3.8	270	4500	G¾	0... 3	0... 11	R21-C3-L R21-C3-O
81	104	43	4.2	300	5000	G½	0... 3	0... 11	R21-C4-L R21-C4-O
109	132	43	6.8	480	8000	G¾	0... 3	0... 11	R31-C6-L R31-C6-O
109	132	43	7.6	540	9000	G1	0... 3	0... 11	R31-C8-L R31-C8-O
135	173	71	18.6	1320	22000	G1½	0... 3	0... 11	R41-CB-L R41-CB-O
135	173	71	20.3	1440	24000	G2	0... 3	0... 11	R41-CC-L R41-CC-O



R21



R31



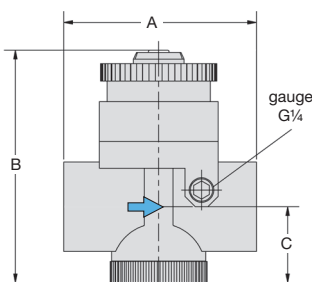
R41

**Special options, add the appropriate letter**

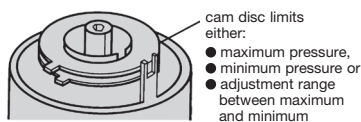
adjustment lock RRP-95-585 R.1-C . . T

**Accessories, enclosed**

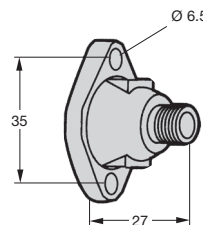
pressure gauge Ø 50 mm, 0...\*2 bar, G¼ for R21 to R41 MA5002-..\*2  
mounting bracket mounting through the gauge port at the back for R21 to R41 RRP-95-590



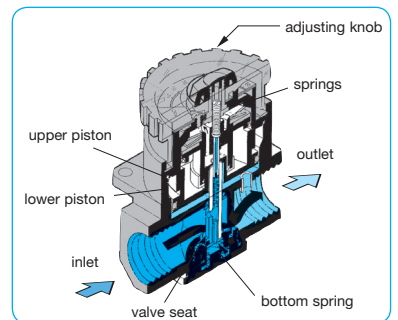
R11...R41



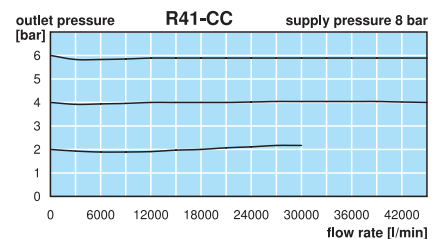
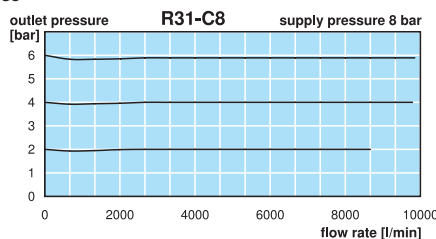
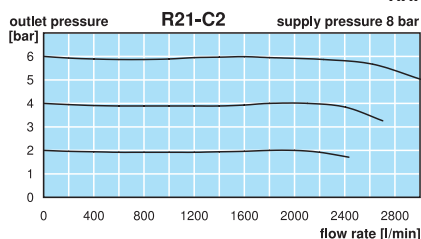
adjustment lock  
RRP-95-585



mounting bracket  
RRP-95-590



cross section



\*1 at 8 bar supply pressure, 6 bar outlet pressure and 1 bar pressure drop  
\*2 04 = 0...4 bar, 16 = 0...16 bar

Gauges: see chapter for measuring devices

PDF CAD  
www.aircom.net

Order example:  
R11-C2-L